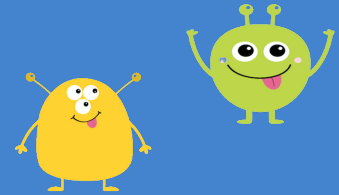


WCSD LEADERBOARD SEE WHO'S LEADING!



Super Fundraisers

| School | Funds Raised |
|----------------|--------------|
| Buena Vista | \$24,140 |
| Murwood | \$20,502 |
| WCI | \$16,374 |
| Walnut Heights | \$15,476 |
| Parkmead | \$12,849 |
| Indian Valley | \$12,751 |
| Tice Creek | \$12,266 |

Super Participation

| School | Participation |
|----------------|---------------|
| Walnut Heights | 63.00% |
| Indian Valley | 61.10% |
| Murwood | 53.68% |
| Buena Vista | 28.23% |
| Parkmead | 37.70% |
| WCI | 34.71% |
| Tice Creek | 27.97% |