

IMPACT REPORT

2019-20



PRESIDENT'S MESSAGE

State funding of our schools isn't enough.

For 37 years, the Walnut Creek Education Foundation (WCEF) has worked with parents, business & civic partners, and community members to supplement funding and enhance public education in our community. Our goal is to help deliver a high level of education for all students from the first day until graduation day.

This year was unlike any other. We faced challenges we didn't even know could exist, and we **exceeded our goal of \$1,275,000! Together!**

With deep appreciation, I am proud to present our Impact Report for 2019-2020.



KATY GRANT
WCEF PRESIDENT/TICE CREEK & WCI PARENT





ABOUT WCEF TK-12



Because well-funded schools create well-rounded students

Like many things in life, creating great schools is the culmination of several variables. You need the right mix of dedicated teachers and professionals, relevant instructional materials, engaged students and families, and an invested community. All of this takes resources and capital, which is what we at WCEF are all about!

Established in 1983, WCEF is a parent-led non-profit organization. The Foundation raises funds in support of eight schools, 5,100 students, and countless teachers and staff in Walnut Creek. WCEF is committed to investing in all stages of learning from early childhood (TK) through high school graduation to ensure all children receive a well-rounded, enhanced education.

Every year our schools rely on 100% participation from our families and the greater community to bridge the almost \$2,550* per student funding gap between what we receive from state and what it costs to provide a quality education to our children.

Join us. Invest in education and the next generation at www.wcefk12.org.

**Ed-Data Financial Data for Walnut Creek, 2018-19.*



MISSION STATEMENT

The Walnut Creek Education Foundation raises funds to preserve and enhance the education of students in the Walnut Creek School District and at Las Lomas High School through a broad-based community effort.

2019-20 FINANCIAL RESULTS



Strength in numbers

You donated, volunteered, zoomed, emailed, called and supported education and our schools in a HUGE way in 2019-20, helping WCEF meet its goal and raise \$1,283,970.14. **Thank you!**

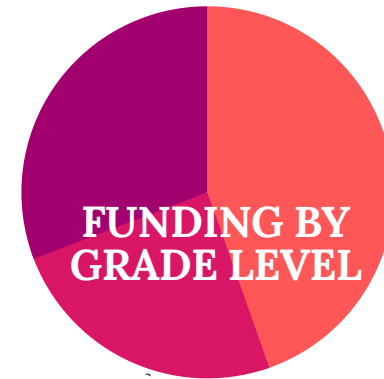
These numbers are unaudited as of Oct. 1, 2020



- **91.6%**
Funds to districts
- **6.1%***
Operating
- **2.3%**
Fundraising



- **81%**
Parents/Community
- **13.7%**
Parent Groups
- **4.4%***
Business, Loan, Grants
- **.9%**
Events



- **44.6%**
WCS D TK-5; 2,260 students
- **24.6%**
WCS D 6-8; 1,260 students
- **30.8%**
Las Lomas HS; 1,565 students

*Includes \$11,000 PPP loan through CARES Act

"THERE IS POWER IN NUMBERS AND THERE IS POWER IN UNITY." —DR. MARTIN LUTHER KING, JR.

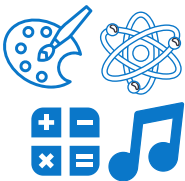


Donations to WCEF helped provide \$497,700 in additional funding, creating countless opportunities in six elementary schools.



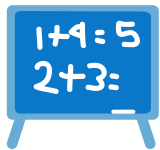
MAINTAIN STAFF & TEACHERS

Salaries for 25+ teachers and specialists to help maintain smaller class sizes, and deliver a well-rounded education



ENRICHING EDUCATION

Weekly art, music and science for grades TK-5 to help develop motor skills, creativity, decision making, listening skills, and self esteem



TK-8 MATH COACH

Math Coach to deepen learning, improve student achievement and test scores, and support teachers



TEACHER GRANT PROGRAM

New in 2019-20 to encourage teacher innovation and student success



"IT ALWAYS SEEMS IMPOSSIBLE UNTIL IT IS DONE." —NELSON MANDELA

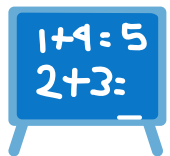


The power of your WCEF donations and \$274,300 of additional funding at WCI and Tice Creek



ADDITIONAL ELECTIVES

Exposure to more electives that reflect student interest and include the arts, STEM, world languages, weight training, and more



TK-8 MATH COACH

Math Coach to deepen learning, improve student achievement and test scores, and support teachers



TEACHER GRANT PROGRAM

New in 2019-20 to encourage teacher innovation and student success

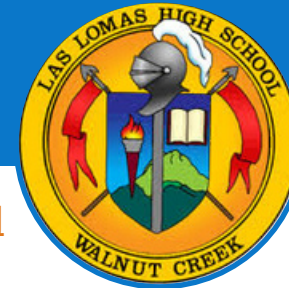


CREDENTIALLED LIBRARIAN

Only 9% of schools in California benefit from a full-time credentialed librarian



"YOU'RE OFF TO GREAT PLACES!" —DR. SEUSS



Your WCEF donations at Las Lomas helped provide \$343,851 in additional funding and make possible ...



COLLEGE READINESS

21 Advanced Placement classes across all subjects including the arts, math, science, English, history to ready students for college



CAREER READINESS

4 career pathways including medical technologies, auto engineering, hospitality, and construction



WELLNESS CENTER

A full-time, dedicated space with trained staff to support students' social-emotional health, peer pressure, and growth



7-PERIOD SCHEDULE

More class offerings mean smaller classes, greater opportunities, student choice, as well as a minimum of two additional electives per year



TECHNOLOGY

Through a grant from F&M Bank, Las Lomas students have access to Chromebooks



BUSINESS PARTNERS

WCEF Business Partners know the value of great public schools and a strong community. We are so grateful to our following partners for their investment in public education.

\$10,000+
PLATINUM PARTNERS



\$5,000-\$9,999
DIAMOND PARTNERS



\$2,500-\$4,999
GOLD PARTNERS



\$1-2,499
PARTNERS

American Swim Academy, Inc
Bounty Hunter Rare Wine & Spirits
C&T Recycling
California Pizza Kitchen, Inc.
Chipotle
Flashlight Books

Honey Bear Trees
Lottie's Creamery LLC
Mooyahs Burgers Fries & Shakes
Pleasant Hill Orthodontics
Propel Fitness LLC
Sarah's Science
WISH Store

2019-20 REAL ESTATE PARTNERS

Started in 2019, we applaud the following Gold Real Estate Partners who truly know the value of strong schools. Thank you for your investment in public education. To learn more about the program, email contact@wcefk12.org.

Support the realtors that support our public schools



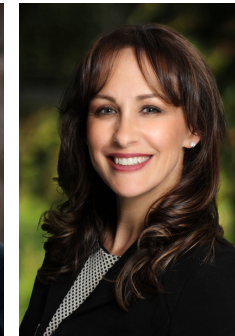
Joshua Simkin England
925.708.4847



Christina Linezo
415.425.3085



Stacy Keller
925.708.1241



Jennifer DeVinney
925.389.3437



Antonia Quanstrtom
925.407.6299



Bryan Hurlbut & Erica Misasi
925.319.4400



Rebecca Burns
925.788.1203



WCEF BOARD



The 2019-20 school year was challenging yet filled with successes. We are extremely grateful to the dedication, leadership, and passion of the WCEF Board members. You are each an asset to our schools, WCEF, and the community. Thank you for helping to steer the ship and answering the many (Zoom) calls needed to support all students through the 2019-20 school year.

2019-20 Executive Board

President	Katy Grant
VP Administration	Sarah Seaway
Treasurer	Michaelyn Williams
VP Fundraising	Jennifer Zimmermann
Secretary	Anu Gandhi
VP Communications	Sherry Mohehati
VP Communications	Jennifer Chaney

General Board

Business Development Chair - Kiroun Saluja
Parent Communication Chair - Eryn King
Parent Fundraising Chair - Heidi Nelkie
Wellness Ambassador - Cathy Wang
Major Gift Chair - Lisa Michelangeli
Endowment Chair - Juan Contreras
Volunteer Chair - Samantha Francois
Grant Chair - Sandra Naughton
Social Media Chair - Alison McDaniel

School Site Representatives

Josee Sirois - Buena Vista
Erica Misasi - Indian Valley
Dayna Loeliger - Indian Valley
Seth Kriz - Murwood
Stacey Goldstein - Parkmead
Sarah Talach - Tice Creek
Sonali Jolly-Wadhwa - Tice Creek
Ben Winig - Walnut Heights
Christina Alessi - WCI
Allison McAdam - WCI
Jami Greer - Las Lomas
Karen Begg - Las Lomas

Trustees

Heidi Gatty
Jennifer DeVinney
Lisa Sun

Auditor

Dan Purcell

Advisors

Marie Morgan - WCSD Superintendent
Dr. John Nickerson - AUHSD Superintendent
Tiffany Benson - Las Lomas Principal
Kathy Coppersmith - AUHSD Governing Board
Katie Pena - WCSD Governing Board
Steve Malton - WCSD Teacher Rep
Ron Jones - WCSD Classified Rep
Maria Laws - Las Lomas Teacher Rep

WCEF Staff

Executive Director - Joanna Grossman

WCEF Consultant

Database Manager - Alison McDaniel

2019-20 DONORS

Community members, parents, teachers, administrators, staff members, and groups all answered the call during the 2019-20 school year. For a full list of donors, please visit www.wcefk12.org/annualreport.

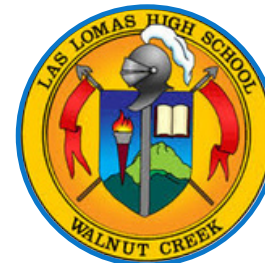


Walnut Creek Education Foundation



TK-12

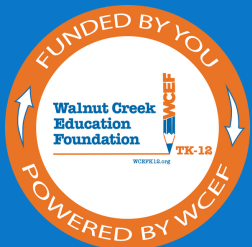
Well-Funded Schools Create Well-Rounded Students



WCEF accepts cash, check, credit, gifts of stock, and car donations.

To set up a quarterly or monthly payment plan with a credit card or e-check, visit www.wcefk12.org.

To make a one-time donation by check, mail check payable to WCEF to the address below.



Walnut Creek Education Foundation TK-12 | Tax ID #94-2915151
contact@wcefk12.org | 925-933-9233 | P.O. Box 186, Walnut Creek, CA 94597